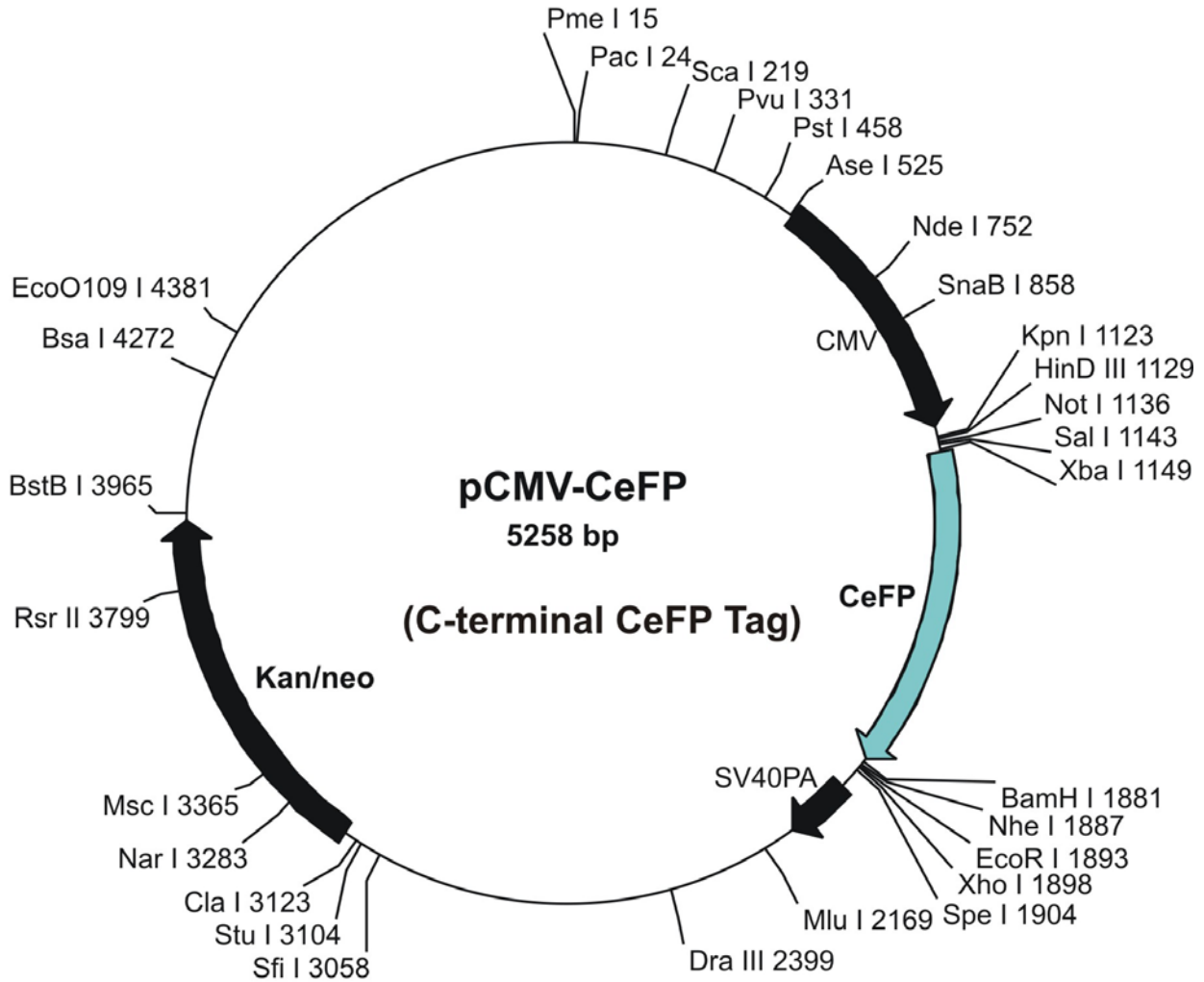
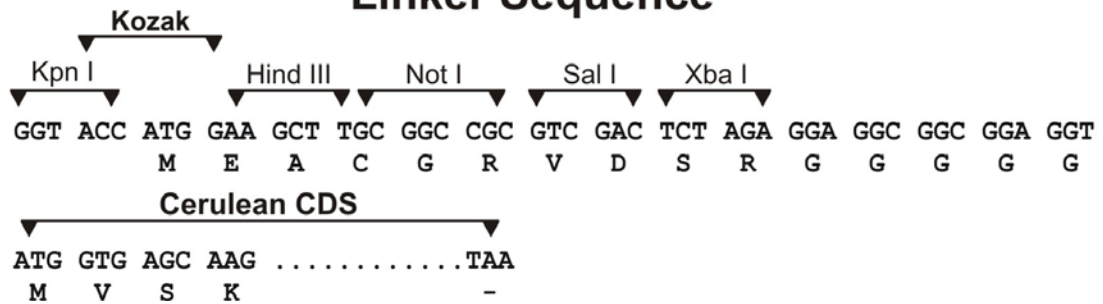


**Name of Vector: pCMV-CeFP (Cerulean by Piston)**  
**Antibiotic Selection: Kan**  
**Created by: Wei Jiang and Hue Luu**  
**(He Lab @ The University of Chicago)**  
**Date of Creation: October 2004**



### Linker Sequence



**pCMV-CeFP Full-length Sequence and Restriction Sites**  
(a.k.a., Cerulean, a modified Cyan FP by David Piston)

TAGTTATTATGTTTAAacttaattaagtgcacgagtggttacatcgaactggatctcaa 60  
cagcggtaagatccttgagagttttcgccccgaagaacgttttccaatgatgagcacttt 120  
taaagttctgctattgtggcgcggtattatcccgtgttgacgcccgggcaagagcaactcgg 180  
tcgcccgcatacactattctcagaatgacttgggtgagtagtactcaccagtccagaaaagca 240  
tcttacggatggcatgacagtaagagaattatgcagtgctgccataaccatgagtgataa 300  
cactgcggccaacttacttctgacaacgatcggaggaccgaaggagctaaccgctttttt 360  
gcacaacatgggggatcatgtaactcgcttgatcgttgggaaccggagctgaatgaagc 420  
cataccaaacgacgagcgtgacaccacgatgcctgcagcaatggcaacaacgcttgcgcaa 480  
actattaactggcgaactacttactctagcttcccggcaacaATTAATAGTAATCAATTA 540  
CGGGGTCATTAGTTTCATAGCCCATATATGGAGTTCCGCGTTACATAACTTACGGTAAATG 600  
GCCCCCTGGCTGACCGCCCAACGACCCCCGCCATTGACGTCAATAATGACGTATGTTT 660  
CCATAGTAACGCCAATAGGGACTTTCCATTGACGTCAATGGGTGGAGTATTTACGGTAAA 720  
CTGCCCACTTGGCAGTACATCAAGTGTATCATATGCCAAGTACGCCCCCTATTGACGTCA 780  
ATGACGGTAAATGGCCCCGCTGGCATTATGCCCAGTACATGACCTTATGGGACTTTCTTA 840  
CTTGGCAGTACATCTACGTATTAGTCATCGCTATTACCATGGTGATGCGGTTTTGGCAGT 900  
ACATCAATGGGCGTGGATAGCGGTTTTGACTCACGGGGATTTCCAAGTCTCCACCCCATTG 960  
ACGTCAATGGGAGTTTTGTTTTGGCACAAAATCAACGGGACTTTCCAAAATGTCGTAACA 1020  
ACTCCGCCCCATTGACGCAAAATGGGCGGTAGGCGTGTACGGTGGGAGGTCTATATAAGCA 1080  
GAGCTGGTTTTAGTGAACCGTCAGATCCgctagagatcggtagaccATGGAAGCTTGGCGCCG 1140  
CGTCGACTCTAGAGGAGGCGGCGGAGGTatggtgagcaagggcgaggagctgttcaccgg 1200  
ggtggtgcccatcctggtcgagctggacggcgacgtaaacggccacaagttcagcgtgtc 1260  
cggcgagggcgagggcgatgccacctacggcaagctgaccctgaagttcatctgcaccac 1320  
cggcaagctgcccgtgccctggcccaccctcgtgaccaccctgacctggggcgctgcagtg 1380  
cttcGCCcgctaccccgaccacatgaagcagcagcacttcttcaagtcggccatgcccga 1440  
aggctacgtccaggagcgcaccatcttcttcaaggacgacggcaactacaagaccgcgc 1500  
cgaggtgaagttcgagggcgacaccctggtgaaccgcatcgagctgaagggcatcgactt 1560  
caaggaggacggcaacatcctggggcacaagctggagtacaacGCCatcagcGACaactg 1620  
ctatatcaccgcccgaagaagcagaagaacggcatcaaggccaacttcaagatccgccacaa 1680  
catcgaggacggcagcgtgcagctcgccgaccactaccagcagaacaccccccatcggcga 1740  
cggccccgtgctgctgcccgcacaaccactacctgagcaccagctccAAGctgagcaaaaga 1800  
ccccaacgagaagcgcgatcacatggtcctgctggagttcgtgaccgcccggggatcac 1860  
tctcggcatggacgagtaaggATCCGCTAGCGAATTCTCGAGACTAGTGATCtatccgat 1920  
ccaccggannnnnnTAACTGATCATAATCAGCCATACCACATTTGTAGAGGTTTTACTTG 1980  
CTTTAAAAAACCTCCACACCTCCCCCTGAACCTGAAACATAAAAATGAATGCAATTGTTG 2040  
TTGTTAACTTGTATTATTGCAGCTTATAATGGTTACAAAATAAAGCAATAGCATCACAAAT 2100  
TCACAAATAAAGCATTTTTTTCACTGCATTCTAGTTGTGGTTTTGTCCAACTCATCAATG 2160  
TATCTTAAACGCGTAAATTTGTAAGCGTTAATATTTTTGTTAAAATTCGCGTTAAATTTTTGT 2220  
TAAATCAGCTCATTTTTTAAACCAATAGGCCGAAATCGGCAAAAATCCCTTATAAATCAAAA 2280  
GAATAGACCGGATAGGGTTGAGTGTGTTGTTCCAGTTTTGGAACAAGAGTCCACTATTAAG 2340  
AACGTGGACTCCAACGTCAAAGGGCGAAAAACCGTCTATCAGGGCGATGGCCCCACTACGT 2400  
GAACCATCACCTAATCAAGTTTTTTGGGGTTCGAGGTGCCGTAAAGCACTAAATCGGAAC 2460  
CCTAAAGGGAGCCCCGATTTAGAGCTTGACGGGAAAGCCGGCGAACGTGGCGAGAAAAG 2520  
GAAGGGAAGAAAGCGAAAGGAGCGGGCGCTAGGGCGCTGGCAAGTGTAGCGGTACGCTG 2580  
CGCGTAACCACCACACCCGCGCGCTTAATGCGCCGCTACAGGGCGCGTCAGGTGGCACT 2640  
TTTTCGGGAAATGTGCGCGGAACCCCTATTTGTTTTATTTTTCTAAATACATTCAAATATG 2700  
TATCCGCTCATGAGACAATAACCCTGATAAATGCTTCAATAATATTGAAAAAGGAAGAGT 2760  
CCTGAGGCGGAAAGAACCAGCTGTGGAATGTGTGTGTCAGTTAGGGTGTGGAAAGTCCCCAG 2820  
GCTCCCCAGCAGGCAGAAGTATGCAAAGCATGCATCTCAATTAGTCAGCAACCAGGTGTG 2880  
GAAAGTCCCCAGGCTCCCCAGCAGGCAGAAGTATGCAAAGCATGCATCTCAATTAGTCAG 2940  
CAACCATAGTCCCCCCCCCTAACTCCGCCCCATCCCGCCCCCTAACTCCGCCCCAGTTCCGCCC 3000  
ATTCTCCGCCCCATGGCTGACTAATTTTTTTTTATTTATGTCAGAGGCCGAGGCCGCTCGG 3060  
CCTCTGAGCTATTCCAGAAGTAGTGAGGAGGCTTTTTTTGGAGGCCCTAGGCTTTTTGCAAAG 3120  
ATCGATCAAGAGACAGGATGAGGATCGTTTTGCGATGATTGAACAAGATGGATTGCACGCA 3180  
GGTTCTCCGGCCGCTTGGGTGGAGAGGCTATTCGGCTATGACTGGGCACAACAGACAATC 3240  
GGCTGCTCTGATGCCGCCGTGTTCCGGCTGTGTCAGCGCAGGGGCGCCCGGTTCTTTTTGTG 3300  
AAGACCGACCTGTCCGGTGCCTGAATGAATGCAAGACGAGGCAGCGCGGCTATCGTGG 3360  
CTGGCCACGACGGGCGTTCCCTTGCGCAGCTGTGCTCGACGTTGTCACTGAAGCGGAAGG 3420  
GACTGGCTGCTATTGGGCGAAGTGCCGGGGCAGGATCTCCTGTCTATCTCACCTTGCTCCT 3480  
GCCGAGAAAGTATCCATCATGGCTGATGCAATGCGGCGGCTGCATACGCTTGATCCGGCT 3540

ACCTGCCCATTCGACCACCAAGCGAAACATCGCATCGAGCGAGCACGTACTCGGATGGAA 3600  
 GCCGGTCTTGTGATCAGGATGATCTGGACGAAGAGCATCAGGGGCTCGCGCCAGCCGAA 3660  
 CTGTTTCGCCAGGCTCAAGGCGAGCATGCCCGACGGCGAGGATCTCGTCTGACCCATGGC 3720  
 GATGCCTGCTTGC CGAATATCATGGTGGAAAATGGCCGCTTTTCTGGATTTCATCGACTGT 3780  
 GGCCGGCTGGGTGTGGCGGACCGCTATCAGGACATAGCGTTGGCTACCCGTGATATTGCT 3840  
 GAAGAGCTTGGCGGCGAATGGGCTGACCGCTTCTCTGCTGCTTTACGGTATCGCCGCTCCC 3900  
 GATTTCGACGCGCATCGCCTTCTATCGCCTTCTTGACGAGTTCTTCTGAGCGGGACTCTGG 3960  
 GGTTTCGAAATGACCGACCAAGCGACGCCAACCTGCCATCACGAGATTTTCGATTCCACCG 4020  
 CCGCCTTCTATGAAAGGTTGGGCTTCGGAATCGTTTTCCGGGACGCCGGCTGGATGATCC 4080  
 TCCAGCGCGGGGATCTCATGCTGGAGTTCTTCGCCACCCCTAGGGGGAGGCTAACTGAAA 4140  
 CACGGAAGGAGACAATACCGAAGGAACCCCGCTATGACGGCAATAAAAAAGACAGAATA 4200  
 AAACGCACGGTGTTGGGTCTGTTTGTTCATAAAACGCGGGGTTTCGGTCCCAGGGCTGGCACT 4260  
 CTGTTCGATACCCACCGAGACCCATTGGGGCCAATACGCCCGGTTTCTTCTTTTCCC 4320  
 CACCCACCCCCCAAGTTTCGGGTGAAGGCCAGGGCTCGCAGCCAACGTGGGGCGGCAG 4380  
 GCCCTGCCATAGCCTCAGGTTACTCATATATACTTTAGATTGATTTAAAACTTCATTTTT 4440  
 AATTTAAAAGGATCTAGGTGAAGATCCTTTTTGATAATCTCATGACCAAAATCCCTTAAC 4500  
 GTGAGTTTTTCGTTCCACTGAGCGTCAGACCCCGTAGAAAAGATCAAAGGATCTTCTTGAG 4560  
 ATCCTTTTTTTCTGCGCGTAATCTGCTGCTTGC AAAACAAAAAACCCGCTACCAGCGG 4620  
 TGGTTTTGTTGCCGGATCAAGAGCTACCAACTCTTTTTCCGAAGGTAACCTGGCTTCAGCA 4680  
 GAGCGCAGATACCAAATACTGTCTTCTAGTGTAGCCGTAGTTAGGCCACCCTTCAAGA 4740  
 ACTCTGTAGCACCGCCTACATACCTCGCTCTGCTAATCCTGTTACCAGTGGCTGCTGCCA 4800  
 GTGGCGATAAGTCGTGTCTTACCGGGTTGGACTCAAGACGATAGTTACCGGATAAGGCGC 4860  
 AGCGGTTCGGGCTGAACGGGGGGTTTCGTGCACACAGCCAGCTTGGAGCGAACGACCTACA 4920  
 CCGAACTGAGATACCTACAGCGTGAGCTATGAGAAAAGCGCCACGCTTCCCGAAGGGAGAA 4980  
 AGGCGGACAGGTATCCGGTAAGCGGCAGGGTCGGAACAGGAGAGCGCACGAGGGGAGCTTC 5040  
 CAGGGGGAAACGCCTGGTATCTTTATAGTCTGTGGGTTTTCGCCACCTCTGACTTGAGC 5100  
 GTCGATTTTTGTGATGCTCGTCAGGGGGCGGAGCCTATGGAAAAACGCCAGCAACGCGG 5160  
 CCTTTTTACGGTTCTTGGCCTTTTGTGCTGGCCTTTTGTCTCACATGTTCTTTCTGCGTTAT 5220  
 CCCCTGATTCTGTGGATAACCGTATTACCGCCATGCAT 5258

**Unique enzymes in pCMV-CeFP:**

Pme I	CTTT AAAC	15
Pac I	TTA,AT`TAA	24
Xmn I	GAANN NNTTC	100
Sca I	AGT ACT	219
Pvu I	CG,AT`CG	331
EcoN I	CCTNN`N,NNAGG	339
Pst I	C,TGCA`G	458
Ase I	AT`TA,AT	525
Vsp I	AT`TA,AT	525
Nde I	CA`TA,TG	752
SnaB I	TAC GTA	858
Acc65 I	G`GTAC,C	1119
Asp718	G`GTAC,C	1119
Kpn I	G,GTAC`C	1123
Hind III	A`AGCT,T	1129
Not I	GC`GGCC,GC	1136
Sal I	G`TCGA,C	1143
Acc I	GT`MK,AC	1144
Xba I	T`CTAG,A	1149
Blp I	GC`TNA,GC	1791
Esp I	GC`TNA,GC	1791
BamH I	G`GATC,C	1881
Nhe I	G`CTAG,C	1887
EcoR I	G`AATT,C	1893
Ava I	C`YCGR,G	1898
PaeR7 I	C`TCGA,G	1898
Xho I	C`TCGA,G	1898
Spe I	A`CTAG,T	1904
PfI M I	CCAN,NNN`NTGG	1928
BstX I	CCAN,NNNN`NTGG	1929
Bcl I	T`GATC,A	1940
Mun I	C`AATT,G	2033
Hpa I	GTT AAC	2046
Mlu I	A`CGCG,T	2169
Dra III	CAC,NNN`GTG	2399
Sfi I	GGCCN,NNN`NGGCC	3058
Stu I	AGG CCT	3104
Cla I	AT`CG,AT	3123
Kas I	G`GCGC,C	3282
Nar I	GG`CG,CC	3283
Ehe I	GGC GCC	3284
Bbe I	G,GCGC`C	3286
Msc I	TGG CCA	3365
Rsr II	CG`GWC,CG	3799
BsiC I	TT`CG,AA	3965
BstB I	TT`CG,AA	3965
Bsa I	GGTCTC 7/11	4272
EcoO109 I	RG`GNC,CY	4381

Number of enzymes = 48

**The following enzymes do not cut in pCMV-CeFP:**

Afl II	Age I	Ahd I	Apa I	Asc I
Bbs I	Bbv II	Bgl II	BsiW I	BsmB I
Bsp120 I	BspM II	BsrG I	BssH II	Bst1107 I
BstE II	Eco47 III	Eco72 I	EcoR V	Fse I
Nru I	Pml I	PpuM I	PspA I	Sac I
Sac II	Sma I	Spl I	Srf I	Xca I

**pCMV-CeFP: sites sorted by name:**

Aat II	(4)	643	696	779	965
Acc I	(1)	1144			
Acc65 I	(1)	1119			
Aci I	(72)	64	141	185	306
		352	576	604	616
		630	797	888	921
		1025	1046	1107	1135
		1139	1159	1162	1388
		1429	1496	1535	1630
		1673	1846	1849	1885
		2543	2570	2598	2601
		2615	2658	2705	2768
		2953	2965	2974	2986
		2996	3007	3053	3192
		3255	3349	3413	3514
		3517	3757	3797	3802
		3852	3868	3894	3950
		4019	4022	4088	4170
		4235	4302	4375	4609
		4618	4753	4863	4984
		5003	5130	5158	5249
Afl III	(2)	2169	5201		
Aha II	(8)	160	640	693	776
		962	3283	3985	4064
Alu I	(24)	347	410	510	1084
		1131	1190	1223	1295
		1328	1544	1592	1703
		1790	2062	2229	2486
		2781	3069	3389	3847
		4644	4901	4947	5037
Alw I	(20)	60	66	381	1099
		1665	1862	1877	1888
		1914	3150	3461	3528
		3707	4072	4099	4458
		4459	4556	4556	4642
AlwN I	(2)	4384	4792		
Apal I	(2)	28	4887		
Apo I	(4)	1893	2097	2201	2212
Ase I	(1)	525			
Asp718	(1)	1119			

Ava I	(1)	1898				3145	3456	3534	3615	
Ava II	(4)	336	1826	3799	4244	3624	3702	4078	4094	
Avr II	(2)	3105	4120			4453	4465	4543	4551	
BamH I	(1)	1881				4562	4637			
Ban I	(6)	983	1119	1205	2436	DpnII (30)	53	70	328	374
		3282	3317				392	1103	1114	1669
Ban II	(3)	2474	3648	4358			1817	1855	1881	1909
Bbe I	(1)	3286					1918	1940	3120	3124
Bbv I	(10)	468	1421	1705	1712		3143	3454	3532	3613
		2071	3356	3398	3919		3622	3700	4076	4092
		4372	4872				4451	4463	4541	4549
Bcl I	(1)	1940					4560	4635		
Bcn I	(8)	165	516	1200	1854	Dra I (5)	15	122	1985	4427
		3288	3448	4061	4825		4446			
Bfa I	(11)	507	1110	1150	1888	Dra III (1)	2399			
		1905	2132	2550	3106	Drd I (3)	2354	3310	5099	
		4121	4455	4708		Dsa I (4)	878	1123	3012	3715
Bgl I	(4)	608	730	801	3058	Eae I (7)	307	1136	1241	3189
Blp I	(1)	1791					3363	3754	3781	
Bpm I	(4)	1614	1854	4066	4123	Eag I (2)	1136	3189		
Bsa I	(1)	4272				Ear I (3)	2750	3627	3837	
BsaA I	(3)	858	2399	3587		Eco57 I (5)	1322	1565	3428	3860
BsaB I	(2)	1945	3142				4660			
BsaH I	(8)	160	640	693	776	EcoN I (1)	339			
		962	3283	3985	4064	EcoO109 I (1)	4381			
BsaJ I	(22)	878	1123	1198	1338	EcoR I (1)	1893			
		1366	1501	1525	1580	EcoR II (17)	606	799	1213	1338
		2817	2889	3012	3047		1365	1450	1525	1579
		3056	3105	3446	3715		2817	2872	2889	3668
		4120	4247	4248	4350		4247	4350	5040	5053
		4351	5041				5174			
BsaW I	(6)	404	1924	3314	4158	Ehe I (1)	3284			
		4848	4995			Esp I (1)	1791			
BeeR I	(3)	1168	1200	3101		Fnu4H I (42)	185	280	307	457
Beg I	(3)	1298	1395	1719			1136	1139	1160	1329
BsiC I	(1)	3965					1410	1694	1701	1752
BsiE I	(5)	182	331	1139	3192		1755	1849	2060	2579
		4867					2601	2615	3053	3192
BsiHKA I	(6)	32	117	1779	3396		3244	3255	3345	3350
		3586	4891				3387	3428	3515	3518
Bsm I	(2)	2034	2127				3521	3757	3853	3894
BsmA I	(6)	951	1896	2708	3126		3908	4022	4361	4376
		4145	4273				4587	4793	4796	4861
BsmF I	(10)	693	844	1012	2799		5004	5159		
		2871	2935	3434	3966	Fok I (8)	261	1197	1563	2956
		4075	4230				3150	3607	3632	4086
BsoF I	(42)	185	280	307	457	Fsp I (2)	477	3385		
		1136	1139	1160	1329	Gdi II (8)	308	1135	1137	1242
		1410	1694	1701	1752		3188	3190	3753	3780
		1755	1849	2060	2579	Gsu I (4)	1613	1853	4067	4122
		2601	2615	3053	3192	Hae I (6)	1659	3104	3365	4727
		3244	3255	3345	3350		5179	5190		
		3387	3428	3515	3518	Hae II (4)	2550	2558	3286	4961
		3521	3757	3853	3894	Hae III (25)	309	602	795	1138
		3908	4022	4361	4376		1243	1343	1659	1744
		4587	4793	4796	4861		2249	2391	3046	3052
		5004	5159				3061	3104	3191	3365
Bspl286 I	(3)	117	1779	3586			3756	3783	4292	4349
BspH I	(2)	2709	4481				4382	4727	5161	5179
BspM I	(3)	3170	3551	4001			5190			
Bsr I	(12)	54	226	493	814	Hga I (8)	167	1043	1131	2617
		1782	2313	2991	3226		3992	4071	4512	5090
		3427	4673	4787	4800	HgiA I (6)	32	117	1779	3396
BsrB I	(4)	2543	2707	3896	3950		3586	4891		
BsrD I	(2)	466	3516			HgiE II (2)	1922	4612		
BssS I	(5)	31	1350	3875	4001	Hha I (25)	141	478	1459	1500
		5028					1816	2549	2557	2583
BstB I	(1)	3965					2605	2614	2627	2658
BstN I	(17)	608	801	1215	1340		3277	3285	3349	3386
		1367	1452	1527	1581		3652	3912	4088	4174
		2819	2874	2891	3670		4577	4686	4860	4960
		4249	4352	5042	5055		5027			
		5176				HinC II (3)	158	1145	2046	
BstU I	(19)	141	578	1141	1498	Hind II (3)	158	1145	2046	
		1816	2171	2207	2583	Hind III (1)	1129			
		2603	2627	2658	3349	Hinf I (12)	928	1146	2326	2348
		3650	4088	4172	4235		2758	3768	3902	3954
		4304	4577	5158			4012	4049	4831	5227
BstX I	(1)	1929				HinI I (8)	160	640	693	776
BstY I	(12)	53	70	1103	1669		962	3283	3985	4064
		1881	3454	3700	4092	HinP I (25)	139	476	1457	1498
		4451	4463	4549	4560		1814	2547	2555	2581
Bsu36 I	(2)	2763	4395				2603	2612	2625	2656
Cac8 I	(36)	454	604	797	1133		3275	3283	3347	3384
		1293	1326	1374	1388		3650	3910	4086	4172
		1698	1705	1889	2502		4575	4684	4858	4958
		2545	2559	2832	2851		5025			
		2904	2923	3177	3363	Hpa I (1)	2046			
		3582	3648	3654	3682	Hpa II (24)	163	405	515	1198
		3686	3727	3731	3785		1261	1321	1852	1925
		4068	4255	4302	4358		2501	3188	3265	3287
		4380	4591	5151	5188		3315	3446	3536	3603
Cfr10 I	(5)	1320	2500	3602	3783		3784	4059	4067	4159
		4066					4633	4823	4849	4996
Cla I	(1)	3123				Hph I (11)	215	893	1183	1188
Csp6 I	(10)	218	736	761	816		1516	1540	1620	2401
		849	900	1057	1120		3462	4353	4469	
		1598	3588			Kas I (1)	3282			
Dde I	(9)	199	1773	1791	2763	Kpn I (1)	1123			
		3065	3946	4395	4518	Mae I (11)	507	1110	1150	1888
		4927					1905	2132	2550	3106
Dpn I	(30)	55	72	330	376		4121	4455	4708	
		394	1105	1116	1671	Mae II (19)	98	471	640	652
		1819	1857	1883	1911		693	776	857	962
		1920	1942	3122	3126		1234	1447	1618	2343

		2355	2398	2508	3399
		3586	4367	4500	
Mae III	(18)	39	227	380	438
		579	666	1015	1352
		1841	2071	2572	2584
		3403	3709	4399	4665
		4781	4844		
Mbo I	(30)	53	70	328	374
		392	1103	1114	1669
		1817	1855	1881	1909
		1918	1940	3120	3124
		3143	3454	3532	3613
		3622	3700	4076	4092
		4451	4463	4541	4549
		4560	4635		
Mbo II	(14)	104	1413	1458	1461
		1654	2538	2766	3643
		3853	3935	4102	4302
		4472	4545		
Mlu I	(1)	2169			
Mme I	(3)	2375	4809	4993	
Mnl I	(36)	327	1059	1146	1149
		1158	1178	1259	1265
		1358	1496	1508	1559
		1679	1962	2001	2010
		2427	2758	3036	3042
		3065	3071	3079	3082
		3094	3134	3198	3334
		3691	3883	4089	4121
		4403	4773	5024	5097
Msc I	(1)	3365			
Mse I	(20)	14	20	24	121
		486	525	1984	2045
		2166	2187	2198	2210
		2221	2238	2336	2607
		4426	4440	4445	4497
Msl I	(4)	288	883	1929	3720
Msp I	(24)	163	405	515	1198
		1261	1321	1852	1925
		2501	3188	3265	3287
		3315	3446	3536	3603
		3784	4059	4067	4159
		4633	4823	4849	4996
MspA1 I	(5)	64	2781	3389	4618
		4863			
Mun I	(1)	2033			
Nae I	(3)	2502	3785	4068	
Nar I	(1)	3283			
Nci I	(8)	164	515	1199	1853
		3287	3447	4060	4824
Nco I	(4)	878	1123	3012	3715
Nde I	(1)	752			
NgoM I	(3)	2500	3783	4066	
Nhe I	(1)	1887			
Nla III	(24)	257	293	371	381
		822	882	1127	1406
		1436	1826	1871	2713
		2853	2925	3016	3157
		3502	3688	3719	3745
		4101	4485	5205	5256
Nla IV	(19)	403	985	1121	1207
		1745	1883	2438	2459
		2471	2662	2823	2895
		3284	3319	4167	4246
		4291	5134	5173	
Not I	(1)	1136			
Nsi I	(3)	2855	2927	5258	
Nsp7524 I	(4)	2849	2921	3684	5201
NspB II	(5)	64	2781	3389	4618
		4863			
NspH I	(4)	2853	2925	3688	5205
Pac I	(1)	24			
Paer7 I	(1)	1898			
Pal I	(25)	309	602	795	1138
		1243	1343	1659	1744
		2249	2391	3046	3052
		3061	3104	3191	3365
		3756	3783	4292	4349
		4382	4727	5161	5179
		5190			
PflM I	(1)	1928			
Ple I	(2)	2334	2766		
Pme I	(1)	15			
Psp1406 I	(2)	98	471		
Pst I	(1)	458			
Pvu I	(1)	331			
Pvu II	(2)	2781	3389		
Rsa I	(10)	219	737	762	817
		850	901	1058	1121
		1599	3589		
Rsr II	(1)	3799			
Sal I	(1)	1143			
Sap I	(2)	3627	3837		
Sau3A I	(30)	53	70	328	374
		392	1103	1114	1669
		1817	1855	1881	1909
		1918	1940	3120	3124
		3143	3454	3532	3613
		3622	3700	4076	4092
		4451	4463	4541	4549
		4560	4635		
Sau96 I	(12)	336	601	794	1342
		1743	1826	2390	3799
		4244	4290	4348	4381
Sca I	(1)	219			

ScrF I	(25)	164	515	608	801
		1199	1215	1340	1367
		1452	1527	1581	1853
		2819	2874	2891	3287
		3447	3670	4060	4249
		4352	4824	5042	5055
		5176			
Sec I	(22)	878	1123	1198	1338
		1366	1501	1525	1580
		2817	2889	3012	3047
		3056	3105	3446	3715
		4120	4247	4248	4350
		4351	5041		
SfaN I	(17)	247	440	876	1269
		1545	1560	1659	2098
		2861	2933	3242	3497
		3581	3645	3713	3920
		5105			
Sfc I	(4)	454	2618	4745	4936
Sfi I	(1)	3058			
SnaB I	(1)	858			
Spe I	(1)	1904			
Sph I	(3)	2853	2925	3688	
Ssp I	(2)	2191	2744		
Stu I	(1)	3104			
Sty I	(6)	878	1123	3012	3105
		3715	4120		
Taq I	(19)	46	1144	1219	1513
		1540	1555	1684	1899
		2432	3123	3396	3552
		3576	3612	3774	3965
		4010	4265	5103	
Tfi I	(5)	3768	3902	4012	4049
		5227			
Tsp45 I	(7)	227	438	1352	1841
		2572	3403	3709	
Tth111 I	(2)	1617	3401		
Tth111 II	(5)	1652	3719	4579	4609
		4618			
Vsp I	(1)	525			
Xba I	(1)	1149			
Xho I	(1)	1898			
Xho II	(12)	53	70	1103	1669
		1881	3454	3700	4092
		4451	4463	4549	4560
Xma III	(2)	1136	3189		
Xmn I	(1)	100			

### Site usage in pCMV-CeFP:

Aat II	G,ACGT`C	4	Acc I	GT`MK,AC	1
Acc65 I	G`GTAC,C	1	Aci I	C`CG,C	72
Afl I II	C`TTAA,G	-	Afl III	A`CRYG,T	2
Age I	A`CCGG,T	-	Aha II	GR`CG,YC	8
Ahd I	GACNN,N`NNGTC	-	Alu I	AG CT	24
Alw I	GGATC 8/9	20	AlwN I	CAG,NNN`CTG	2
Apa I	G,GGCC`C	-	ApaL I	G`TGCA,C	2
Apo I	R`AATT,Y	4	Asc I	GG`CGCG,CC	-
Ase I	AT`TA,AT	1	Asp718	G`GTAC,C	1
Ava I	C`YCGR,G	1	Ava II	G`GWC,C	4
Avr II	C`TAG,G	2	BamH I	G`GATC,C	1
Ban I	G`GYRC,C	6	Ban II	G,RGCY`C	3
Bbe I	G,CGCC`C	1	Bbs I	GAAGAC 8/12	-
Bbv I	GCAGC 13/17	10	Bbv II	GAAGAC 7/11	-
Bcl I	T`GATC,A	1	Bcn I	CC,S`GG	8
Bfa I	C`TA,G	11	Bgl I	GCNN,NNN`NGGC	4
Bgl II	A`GATC,T	-	Blp I	GC`TNA,GC	1
Bpm I	CTGGAG 22/20	4	Bsa I	GGTCTC 7/11	1
BsaA I	YAC GTR	3	BsaB I	GATNN NNATC	2
BsaH I	GR`CG,YC	8	BsaJ I	C`CNNG,G	22
BsaW I	W`CCGG,W	6	BseR I	GAGGAG 16/14	3
Bsg I	GTGCAG 22/20	3	BsC I	TT`CG,AA	1
BsE I	CG,RY`CG	5	BsI HKA I	G,WGCW`C	6
BsI W I	C`GTAC,G	-	Bsm I	GAATG,C 7	2
BsmA I	GTCTC`/9	6	BsmB I	CGTCTC 7/11	-
BsmF I	GGGAC 15/19	10	BsoF I	GC`N,GC	42
Bsp120 I	G`GGCC,C	-	Bsp1286 I	G,DGCH`C	3
BspH I	T`CATG,A	2	BspM I	ACCTGC 10/14	3
BspM II	T`CCGG,A	-	Bsr I	ACT,GG`C	12
BsrB I	GAG CGG	4	BsrD I	GCAATG, 8	2
BsrG I	T`GTAC,A	-	BssH II	G`CGCG,C	-
BssS I	C`TCGT,G	5	Bst1107 I	GTA TAC	-
BstB I	TT`CG,AA	1	BstE II	G`GTNAC,C	-
BstN I	CC`W,GG	17	BstU I	CG CG	19
BstX I	CCAN,NNNN`NTGG	1	BstY I	R`GATC,Y	12
Bsu36 I	CC`TNA,GG	2	Cac8 I	GCN NGC	36
Cfr10 I	R`CCGG,Y	5	ClA I	AT`CG,AT	1
Csp6 I	G`TA,C	10	Dde I	C`TNA,G	9
Dpn I	GA TC	30	DpnII	`GATC,	30
Dra I	TTT AAA	5	Dra III	CAC,NNN`GTG	1
Drd I	GACNN,NN`NNGTC	3	Dsa I	C`CRYG,G	4
Eae I	Y`GGCC,R	7	Eag I	C`GGCC,G	2
Ear I	CTCTTC 7/10	3	Eco47 III	AGC GCT	-
Eco57 I	CTGAAG 21/19	5	Eco72 I	CAC GTG	-
EcoN I	CCTNN`N,NNAGG	1	Eco0109 I	RG`GNC,CY	1
EcoR I	G`AATT,C	1	EcoR II	`CCWGG,	17
EcoR V	GAT ATC	-	Eat I	GGC GCC	1
Esp I	GC`TNA,GC	1	Fnu4H I	GC`N,GC	42
Fok I	GGATG 14/18	8	Fse I	GG,CCGG`CC	-
Fsp I	TGC GCA	2	Gdi II	`YGGC,CG	8
Gsu I	CTGGAG 21/19	4	Hae I	WGG CCW	6
Hae II	R,CGC`Y	4	Hae III	GG CC	25
Hga I	GACGC 9/14	8	HgiA I	G,WGCW`C	6

HgiE II	ACCNNNNNNGGT -1/132	Hha I	G,CG`C	25	Pml I	CAC GTG	-	PpuM I	RG`GWC,CY	-
Hinc II	GTY RAC	Hind II	GTY RAC	3	Psp1406 I	AA`CG,TT	2	PspA I	C`CCGG,G	-
Hind III	A`AGCT,T	Hinf I	G`ANT,C	12	Pst I	C,TGCA`G	1	Pvu I	CG,AT`CG	1
HinI I	GR`CG,YC	HinP I	G`CG,C	25	Pvu II	CAG CTG	2	Rsa I	GT AC	10
Hpa I	GTT AAC	Hpa II	C`CG,G	24	Rsr II	CG`GWC,CG	1	Sac I	G,AGCT`C	-
Hph I	GGTGA 12/11	Kas I	G`GCGC,C	1	Sac II	CC,GC`GG	-	Sal I	G`TCGA,C	1
Kpn I	G,GTAC`C	Mae I	C`TA,G	11	Sap I	GCTCTTC 8/11	2	Sau3A I	`GATC,	30
Mae II	A`CG,T	Mae III	`GTNAC,	18	Sau96 I	G`GNC,C	12	Sca I	AGT ACT	1
Mbo I	`GATC,	Mbo II	GAAGA 12/11	14	ScrF I	CC`N,GG	25	Sec I	C`CNNG,G	22
Mlu I	A`CGCG,T	Mme I	TCCRAC 25/23	3	SfaN I	GCATC 9/13	17	Sfc I	C`TRYA,G	4
Mnl I	CCTC 10/10	Msc I	TGG CCA	1	Sfi I	GGCCN,NNN`NGGCC	1	Sma I	CCC GGG	-
Mse I	T`TA,A	Msl I	CAYNN NNRTG	4	SnaB I	TAC GTA	1	Spe I	A`CTAG,T	1
Msp I	C`CG,G	MspAl I	CMG CKG	5	Sph I	G,CATG`C	3	Spl I	C`GTAC,G	-
Mun I	C`AATT,G	Nae I	GCC GGC	3	Srf I	GCCC GGGC	-	Ssp I	AAT ATT	2
Nar I	GG`CG,CC	Nci I	CC`S,GG	8	Stu I	AGG CCT	1	Sty I	C`CWWG,G	6
Nco I	C`CATG,G	Nde I	CA`TA,TG	1	Taq I	T`CG,A	19	Tfi I	G`AWT,C	5
NgoM I	G`CCGG,C	Nhe I	G`CTAG,C	1	Tsp45 I	`GTSAC,	7	Tth111 I	GACN`N,NGTC	2
Nla III	,CATG`	Nla IV	GGN NCC	19	Tth111 II	CAARCA 16/14	5	Vsp I	AT`TA,AT	1
Not I	GC`GGCC,GC	Nru I	TCG CGA	-	Xba I	T`CTAG,A	1	Xca I	GTA TAC	-
Nsi I	A,TGCA`T	Nsp7524 I	R`CATG,Y	4	Xcm I	CCANNNN,N`NNNNTGG-	-	Xho I	C`TCGA,G	1
NspB II	CMG CKG	NspH I	R,CATG`Y	4	Xho II	R`GATC,Y	12	Xma I	C`CCGG,G	-
Pac I	TTA,AT`TAA	PaeR7 I	C`TCGA,G	1	Xma III	C`GGCC,G	2	Xmn I	GAANN NNITC	1
Pal I	GG CC	PflM I	CCAN,NNN`NTGG	1						
Ple I	GAGTC 9/10	Pme I	CTTT AAAC	1						